

KARIBU-KILIFAIR



June 4-7, 2026

Magereza Ground - Arusha



OFFICIAL FAM TRIP PROGRAM "F"

FAMILIARIZATION TRIP GUIDELINES
FOR KARIBU-KILIFAIR 2026 BUYERS



Northern Circuit (June 8-10, 2026)
Northern Tanzania Safari Experience



**KARIBU
KILIFAIR**

TANZANIA
Unforgettable!



For more information
Please contact
P: +255 755 468 950
E: sarah@kilifair.com



FAM TRIP: F

Northern Tanzania Safari Experience

GROUND OPERATORS:

Beach & Safari Holidays



ACCOMMODATION & ACTIVITY SPONSORS:

Africa Safari Lodges



SUPPORTED BY:



FOR MORE FAM TRIP INFORMATION CONTACT:

Email: sarah@kilifair.com

Mobile: +255 755 468 950

KILIFAIR CONTACTS:

P.O. Box 8545, Moshi - Tanzania

Phone: +255 754 200 580

Mobile: +255 755 468 950

Email: sarah@kilifair.com



DAY 1:

Tarangire National Park - Monday, June 8, 2026

Your day begins at Africa Safari Arusha, where you will meet for a site inspection. After the inspection, you will depart for a game drive in Tarangire National Park.

Tarangire is renowned for its large elephant herds and majestic baobab trees, offering a classic safari landscape of seasonal swamps, river systems, and open savannah. The Tarangire River attracts a high concentration of wildlife, making it an ideal introduction to Tanzania's wilderness.

Enjoy a scenic game drive through the park with a lunch box provided. In the late afternoon, proceed to Africa Safari Rift Valley for a site inspection, followed by dinner and an overnight stay

Site Visits: Africa Safari Arusha, Tarangire National Park, Africa Safari Rift Valley

Approximate driving time: 2-3 hours

Commonly seen animals: Elephant, giraffe, zebra, wildebeest, buffalo, lion, leopard, impala, warthog, ostrich.

Meals: Lunch, Dinner

Overnight: Africa Safari Rift Valley

(All transfers & meals - L/D - included)

DAY 2:

Lake Manyara National Park - Karatu - Tuesday, June 9, 2026

After breakfast, you will depart for a game drive in Lake Manyara National Park. Famous for its tree-climbing lions and diverse ecosystems, the park offers lush groundwater forests, open plains, and the alkaline lake itself, which attracts a wide variety of birdlife including flamingos. Despite its compact size, Lake Manyara is one of Tanzania's most ecologically diverse parks.

Midday, you will enjoy lunch and a site inspection at Africa Safari Manyara Escarpment. Thereafter, continue to Karatu for a site inspection at Africa Safari Karatu, followed by dinner and an overnight stay.

Site Visits: Lake Manyara National Park, Africa Safari Manyara Escarpment, Africa Safari Karatu

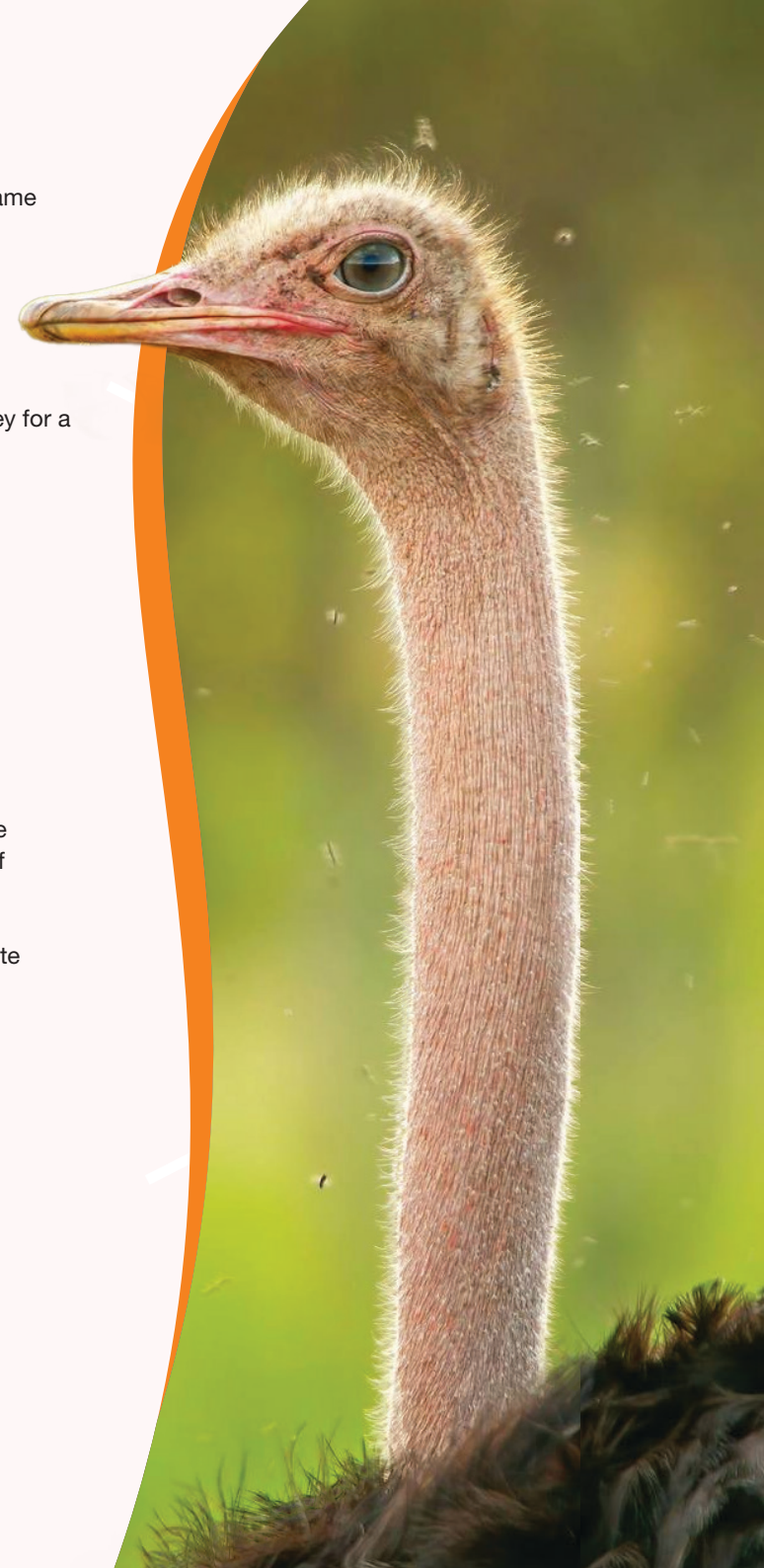
Approximate driving time: 2-3 hours

Commonly seen animals: Flamingo, elephant, hippo, giraffe, buffalo, zebra, lion, baboon, monkey.

Meals: Breakfast, Lunch, Dinner

Overnight: Africa Safari Karatu

(All transfers & meals - B/L/D - included)



DAY 3:

Ngorongoro Crater - Arusha - Wednesday, June 10, 2026

After an early breakfast, you will depart for the Ngorongoro Conservation Area and descend into the Ngorongoro Crater for a morning game drive.

Often referred to as one of Africa's natural wonders, the crater is the world's largest intact volcanic caldera and hosts an incredible density of wildlife within its walls. This unique ecosystem provides one of the best opportunities to spot the Big Five, including the endangered black rhino.

You will enjoy a game drive on the crater floor with a lunch box provided. In the early afternoon, you will ascend the crater and begin your journey back to Arusha, arriving in the early evening for drop-off in the Arusha area.

Site Visits: Lake Manyara National Park, Africa Safari Manyara Escarpment, Africa Safari Karatu

Approximate driving time: 3-4 hours

Commonly seen animals: Elephant, black rhino, buffalo, lion, zebra, hyena, wildebeest, hippo.

Meals: Breakfast & Lunch

(All transfers & meals - B/L - included)

SAFARI PACKAGE INCLUDES:

- Up to 12 agents (2 vehicles)
- Twin sharing accommodation (single rooms subject to availability)
- Lunch boxes on 8 June and 10 June; lunch at Escarpment on 9 June
- Dinner and breakfast throughout
- 3 drinks per person per night
- Drinking water in the vehicle
- Professional driver-guide

SAFARI PACKAGE EXCLUDES:

- International and domestic flights
- Airport transfers (unless arranged separately)
- Personal expenses (telephone, laundry, beverages, etc.)
- Visa fees
- Gratuities (Recommended: USD 10 per person per day for driver-guide)
- Park fees including the crater (to be arranged by Kilifair)

